

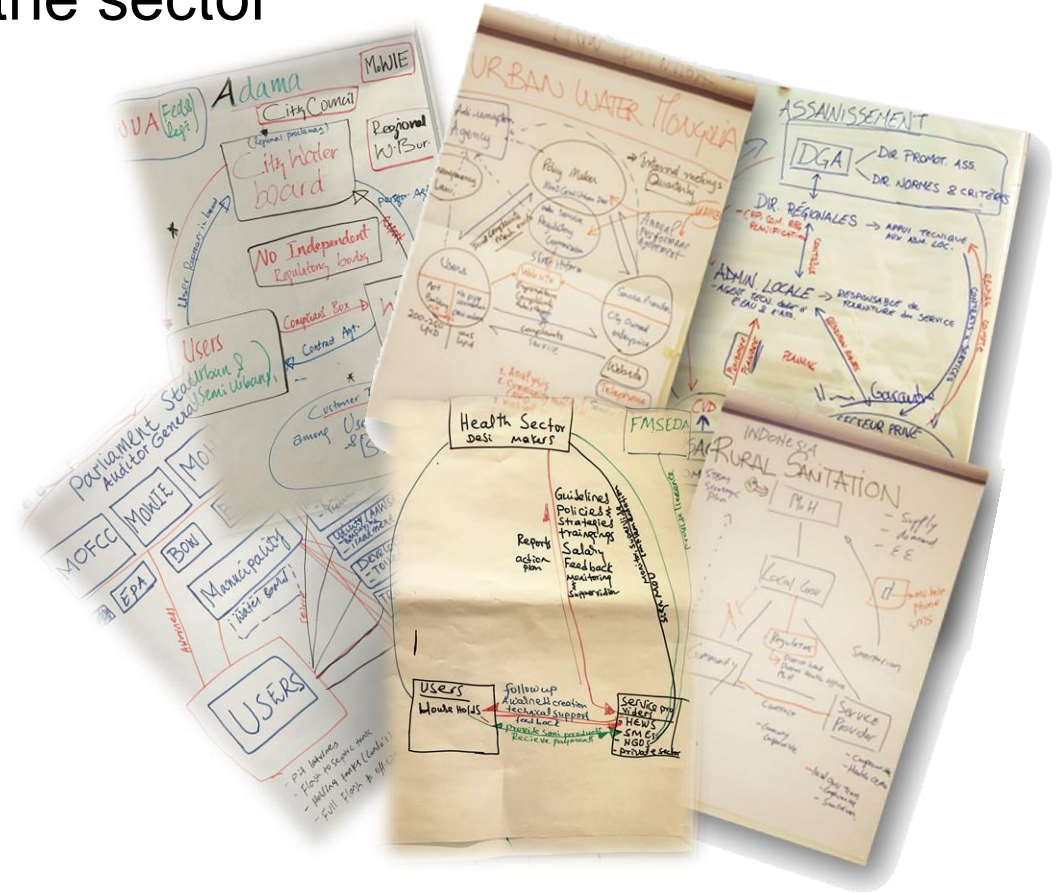
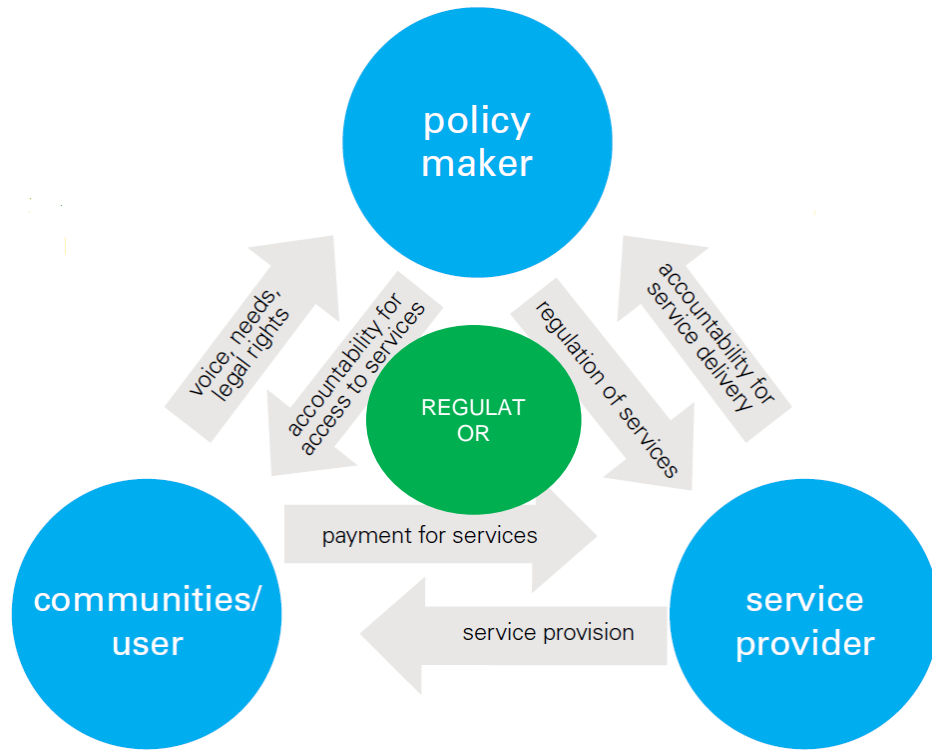
Accountability Mapping

Pilar Avello, Programme Manager, SIWI

ACCOUNTABILITY FOR
SUSTAINABILITY



The accountability mapping exercise at the sector level aims to provide an overview of the structure of service delivery and to identify accountability challenges within the sector



ACCOUNTABILITY FOR SUSTAINABILITY

What can we change to improve service delivery?

ACCOUNTABILITY FOR
SUSTAINABILITY

unicef 

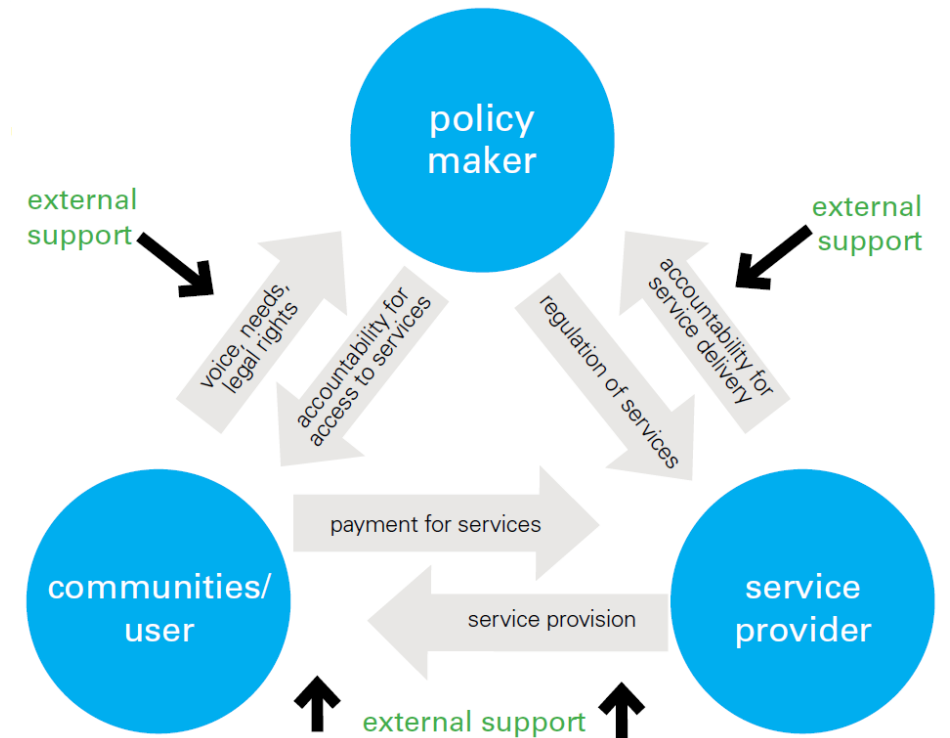
 WATER
GOVERNANCE
FACILITY

SIWI 

 UN
DP

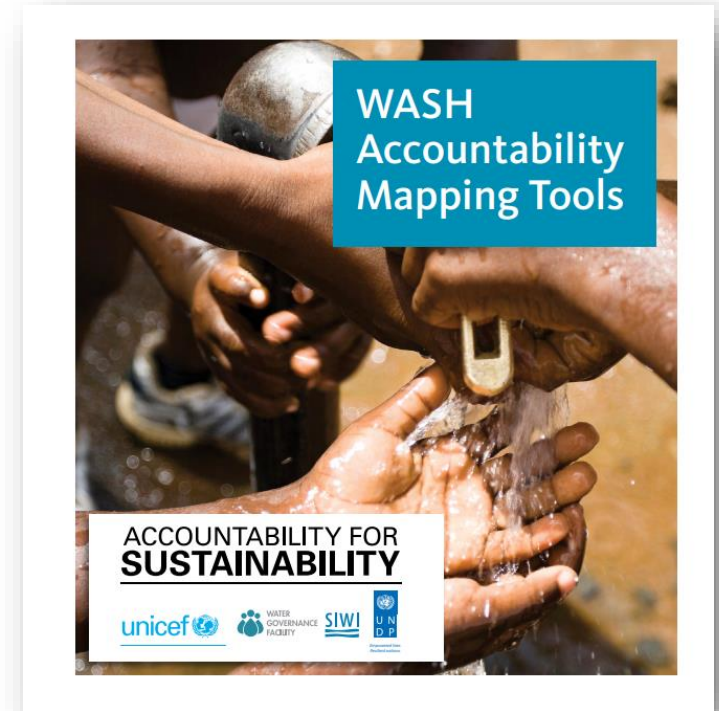
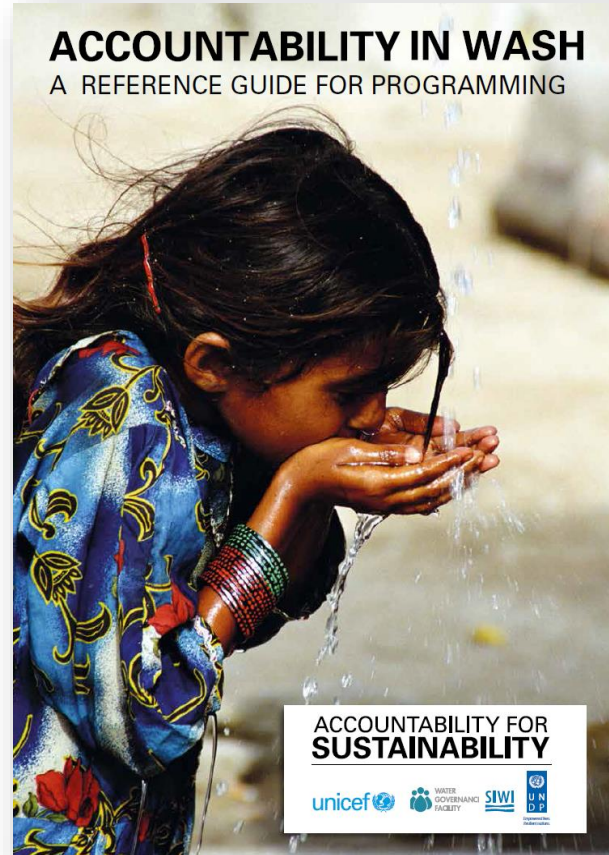
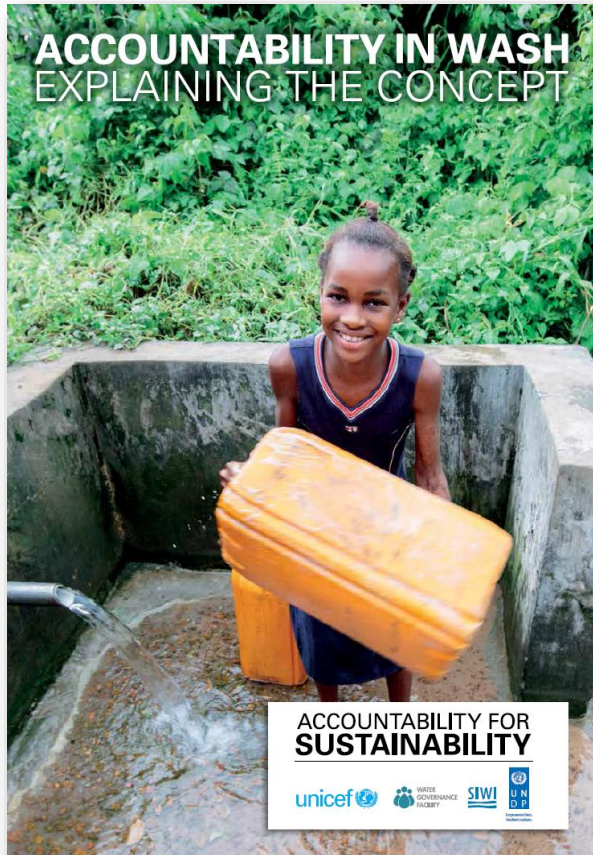
Making the links work

- Experience shows that it is possible to improve accountability links.
- External support can aim to enhance
 - 1) the capacity of actors to play their roles
 - 2) their mutual relationships
- External support can strengthen horizontal, vertical and transversal accountability links



ACCOUNTABILITY FOR
SUSTAINABILITY

Materials available



ACCOUNTABILITY FOR
SUSTAINABILITY

Complementing the WASHBAT

- Eye-opener exercise to identify actors involved in service provision
- It provides a different perspective when scoring the criteria
- For rural contexts, it helps to look at access to water in terms of service delivery

ACCOUNTABILITY FOR
SUSTAINABILITY

unicef 

 WATER
GOVERNANCE
FACILITY

SIWI 

 UN
DP

Thank you

pilar.avello@siwi.org

ACCOUNTABILITY FOR **SUSTAINABILITY**



Empowerment Works